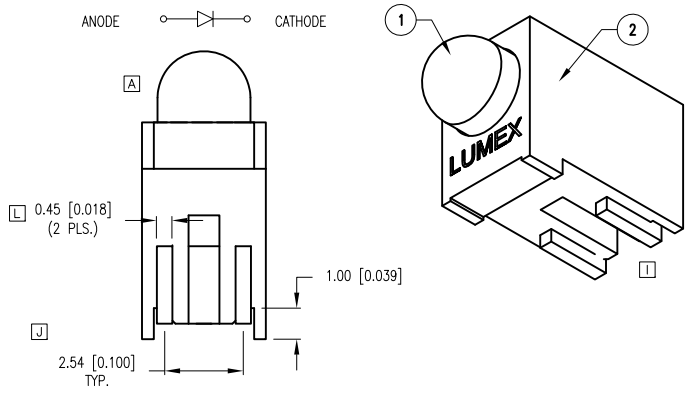


PATENT PENDING

PART NUMBER	SSF-LXH305GD(-TR)	REV.	M
DATE	E.C.N. NUMBER AND REVISION COMMENTS		REV.
05.13.94	ADDED SOLDER PROFILE.		A
09.12.94	UPDATED SAFE OPER SPECS.		B
11.16.94	UPDATED SAFE OPER SPECS.		C
03.13.95	CORRECTED PROTRUSION		D
07.05.95	ADDED TAPE AND REEL OPTION.		E
10.15.97	E.C.N. #10BRDR. & REDRAWN.		F
05.22.00	E.C.N. #10625.		G
11.30.00	E.C.N. #10683.		H
09.04.01	E.C.N. #10782.		I
04.22.02	E.C.N. #10855		J
05.15.02	E.C.N. #10864.		K
02.20.06	E.C.N. #11311. & 11148.		L
04.18.11	E.C.N. #10BRDR. & REDRAWN.		M



ELECTRO-OPTICAL CHARACTERISTICS TA =25°C If=20mA

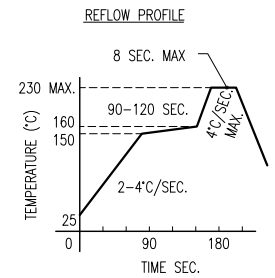
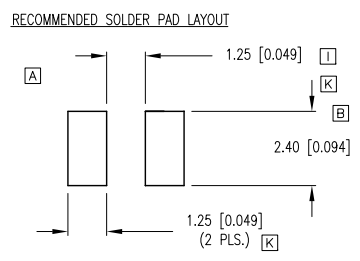
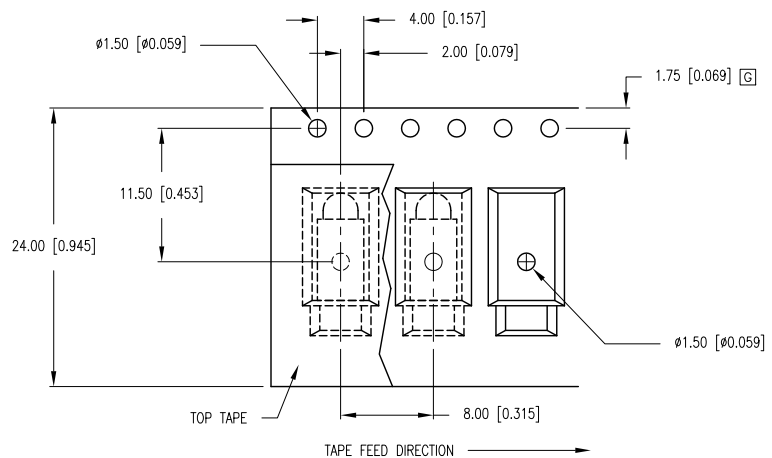
PARAMETER	MIN	TYP.	MAX	UNITS	TEST COND
PEAK WAVELENGTH		565		nm	
FORWARD VOLTAGE		2.2	2.6	Vf	
REVERSE VOLTAGE	5.0			Vr	Ir=100µA
AXIAL INTENSITY		30		mcd	If=20mA
VIEWING ANGLE		60		2x theta	
EMITTED COLOR:	GREEN				
EPOXY LENS FINISH:	GREEN DIFFUSED				

[B] LIMITS OF SAFE OPERATION AT 25°C

PARAMETER	MAX	UNITS
PEAK FORWARD CURRENT*	150	mA
STEADY CURRENT	25	mA
POWER DISSIPATION	105	mW
DERATE FROM 25°C	-1.6	mW/°C
OPERATING TEMP.	-40 TO +85	°C
STORAGE TEMP.	-40 TO +85	°C
SOLDERING TEMP.	+230	°C
2.0mm FROM BODY	3	SEC. MAX.

* I<10µS

- NOTES:
1. SSL-LX305F6GD, GREEN LED.
 2. SSH-LXH305, BLACK HOLDER.
 3. -TR SUFFIX TO DESIGNATE TAPE AND REEL SUPPLIED.
 4. CARRIER TAPE #LXP-CARRIER24-56.



*UNLESS OTHERWISE SPECIFIED TOLERANCES PER DECIMAL PRECISION ARE: X=±1 (±0.039), X.X=±0.5 (±0.020), X.XX=±0.25 (±0.010), X.XXX=±0.127 (±0.005). LEAD SIZE=±0.05 (±0.002), LEAD LENGTH=±0.75 (±0.030). MIN.= +DECIMAL PRECISION MAX.= +0.00 -DECIMAL PRECISION



425 N. GARY AVE.
CAROL STREAM, IL 60188
PHONE: 630-315-2150
FAX: 630-315-2151
WEB: WWW.LUMEX.COM

T-3mm (T-1) RIGHT ANGLE SURFACE MOUNT LED, 565nm GREEN LED, GREEN DIFFUSED LENS, TAPE & REEL.

THE SPECIFICATIONS MAY CHANGE AT ANY TIME WITHOUT NOTICE DUE TO NEW MATERIALS OR PRODUCT IMPROVEMENT.

CONFIDENTIAL INFORMATION
THE INFORMATION CONTAINED IN THIS DOCUMENT IS THE PROPERTY OF LUMEX INC. EXCEPT AS SPECIFICALLY AUTHORIZED IN WRITING BY LUMEX INC., THE HOLDER OF THIS DOCUMENT SHALL KEEP ALL INFORMATION CONTAINED HEREIN CONFIDENTIAL AND SHALL PROTECT SAME IN WHOLE OR IN PART FROM DISCLOSURE AND DISSEMINATION TO ALL THIRD PARTIES.

DATE: 04.18.11	DRAWN BY: AB
PAGE: 1 OF 1	CHKD BY: JD
SCALE: NTS	APRVD BY: KF
UNIT: mm [INCH]	(Pb)